



Aluminium Slender Anode

Aluminum anodes are typically used for cathodic protection of marine steel structures like ship hulls, wharfs, supporting piers, pilings, marine infrastructure, offshore platforms, bridges, sea water cooling system, and condensers.

YUXI has been casting anodes for about 50 years. We use the medium frequency induction furnaces to melt the alloy which ensures the high efficiency of anodes while maintaining the yearly production capacity of 5,000 tons.

The aluminum alloy can be cast into almost any shape, any specific designs and sizes are available as per clients requests.

Office: +86(574)8388 2233

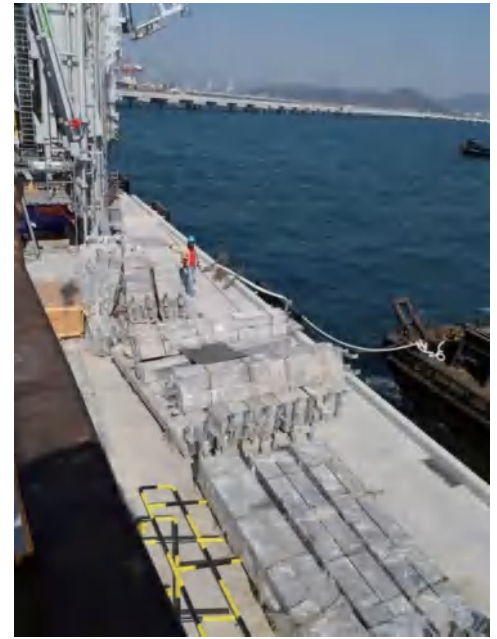
Dongxi, Xinqiao, Xiangshan
Ningbo 315725, P.R.China

info@yuxi-anode.com

www.yuxi-anode.com

APPLICATION

- ▶ Large current output: more than 1,135 A.h/lb (2,500A•h/kg)
- ▶ Low consumption rate with longer life
- ▶ Good performance and stable current output in seawater / marine environments
- ▶ Low density, fit for the structures that have strict load and weight limits
- ▶ Easy to install



CHEMICAL COMPOSITION

Element	GALVALUM III	DNV-RP-B401-2011	GS EP COR 201
	Al-Zn-In-Si	Al-Zn-In	Al-Zn-In
Zinc(Zn)	2.0~6.0%	2.5~5.75%	4.75~5.75%
Indium(In)	0.01~0.02%	0.015~0.04%	0.015~0.02%
Cadmium(Cd)	/	0.002% Max.	0.002% Max.
Silicon(Si)	0.08~0.20%	0.12% Max.	0.06~0.12%
Iron(Fe)	0.13%	0.09% Max.	0.12% Max.
Copper(Cu)	0.006% Max.	0.003% Max.	0.003% Max.
Others Total	0.10%Max	0.10% Max.	0.10% Max.
Aluminum(Al)	Remainder	Remainder	Remainder

ELECTROCHEMICAL PROPERTIES

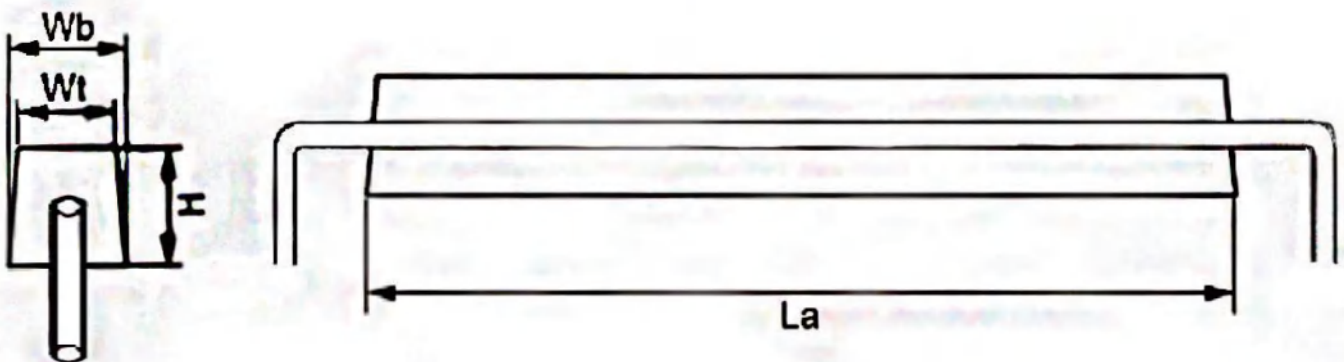
Operating Potential (-V)	Current Capacity	Consumption Rate	Current Efficiency	Solubility
1.05-1.10	1135A.h/lbs (2500A.h/kg)	7.6lbs/amp.yr	90% Min.	Solute Uniformly

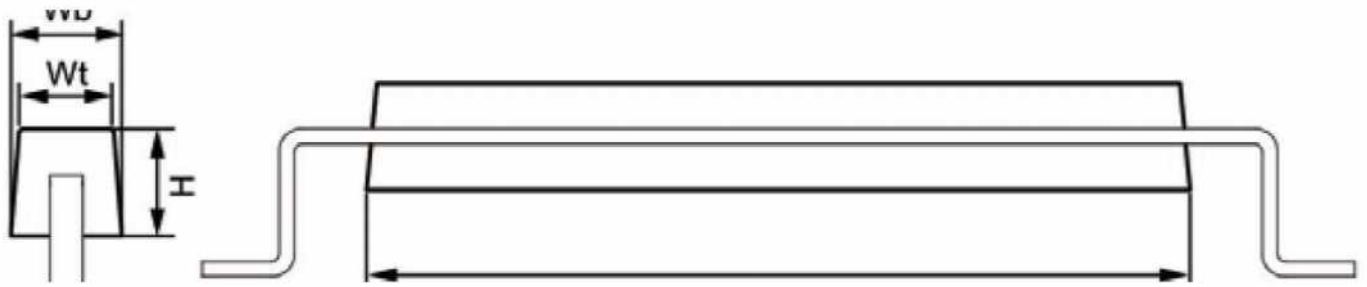
- Open / Close circuit potential is with respect to a Ag/AgCl reference electrode.

SPECIFICATIONS

Slender anodes with stand-off support (Steel Pipe Core)

Anode Type	Weight		Size	Steel Core Insert		
	Anode	Core	$La \times (Wt+Wb) \times H$	Dia.	Lc	Pipe Specification
YX-AL-SSO1	124.6lbs (56.5kg)	23.1lbs (10.5kg)	35.4"×(5.9"+6.7")×6.3" 900×(150+170)×160mm	1.97" (50mm)	51.2" (1300mm)	Thickness0.2" (5mm)SCH80
YX-AL-SSO2	277.8lbs (126kg)	30.9lbs (14.0kg)	59.1"×(6.7"+7.9")×7.1" 1500×(170+200)×180mm	1.97" (50mm)	74.8" (1900mm)	Thickness0.2" (5mm)SCH80
YX-AL-SSO3	400.1lbs (181.5kg)	40.8lbs (18.5kg)	63.0"×(7.8"+8.3")×8.7" 1600×(200+210)×220mm	2.35" (60mm)	78.7" (2000mm)	Thickness0.2" (5mm)SCH80
YX-AL-SSO4	637.1lbs (289kg)	78.3lbs (35.5kg)	90.5"×(8.7"+9.5")×9.1" (2300×(220+240)×230mm)	3.5" (89mm)	110.2" (2800mm)	Thickness0.2" (5mm)SCH80





Anode Type	Weight		Size $La \times (Wt+Wb) \times H$	Steel Core Insert	
	Anode	Core		Flat Steel Core ($Lc \times Wc \times Hc$)	Pipe Steel Core (Dia. \times Lc)
YX-AL-SSF1	47.6lbs (21.6kg)	2.4lbs (1.1kg)	19.7" \times (4.5" + 5.3") \times 5.1" (500 \times (115+135) \times 130mm)	2.0" \times 0.16" \times 29.5" (50 \times 4 \times 750mm)	Φ 0.63" \times 29.5" (Φ 16 \times 750mm)
YX-AL-SSF2	71.7lbs (32.5kg)	3.3lbs (1.5kg)	29.5" \times (4.5" + 5.3") \times 5.1" (750 \times (115+135) \times 130mm)	2.0" \times 0.16" \times 39.4" (50 \times 4 \times 1000mm)	Φ 0.63" \times 39.4" (Φ 16 \times 1000mm)
YX-AL-SSF3	94.8lbs (43.0kg)	6.6lbs (3.0kg)	39.4" \times (4.5" + 5.3") \times 5.1" (1000 \times (115+135) \times 130mm)	2.0" \times 0.24" \times 49.2" (50 \times 6 \times 1250mm)	Φ 0.785" \times 49.2" (Φ 20 \times 1250mm)
YX-AL-SSF4	118.4lbs (53.7kg)	7.9lbs (3.6kg)	49.2" \times (4.5" + 5.3") \times 5.1" (1250 \times (115+135) \times 130mm)	2.0" \times 0.24" \times 59.1" (50 \times 6 \times 1500mm)	Φ 0.785" \times 59.1" (Φ 20 \times 1500mm)
YX-AL-SSF5	140.7lbs (63.8kg)	6.2lbs (2.8kg)	27.6" \times (6.3" + 8.65") \times 7.1" (700 \times (160+220) \times 180mm)	2.0" \times 0.3" \times 37.4" (50 \times 8 \times 950mm)	Φ 0.865" \times 37.4" (Φ 22 \times 950mm)
YX-AL-SSF6	168.7lbs (76.5kg)	8.8lbs (4.0kg)	31.5" \times (7.85" + 11.0") \times 6.0" (800 \times (200+280) \times 150mm)	2.0" \times 0.4" \times 41.35" (50 \times 10 \times 1050mm)	Φ 1.0" \times 41.5" (Φ 25 \times 1050mm)
YX-AL-SSF7	179.7lbs (81.5kg)	9.3lbs (4.2kg)	33.5" \times (7.1" + 8.65") \times 7.1" (850 \times (180+220) \times 180mm)	2.0" \times 0.4" \times 43.3" (50 \times 10 \times 1100mm)	Φ 1.0" \times 43.3" (Φ 25 \times 1100mm)
YX-AL-SSF8	242.5lbs (110.0kg)	15.0lbs (6.8kg)	59.1" \times (5.8" + 7.0") \times 6.7" (1500 \times (148+178) \times 170mm)	2.0" \times 0.4" \times 70.9" (50 \times 10 \times 1800mm)	Φ 1.0" \times 70.9" (Φ 25 \times 1800mm)