

FLUSH-MOUNTED ALUMINUM SLENDER ANODES

PRODUCT DATA SHEET

FLUSH-MOUNTED ALUMINUM SLENDER ANODES

Aluminum anode is a popular choice for off-shore cathodic protection due to its light weight, simplicity of installation and adaptability to cast into a variety of sizes. As the anode is in direct contact with the surface to be protected, this flush mount anode is closer and more compliant to the structure's geometric shape and has lower effect on resistance.

CHEMICAL COMPOSITION

Casted in low-iron, high-purity alloys, our aluminum anodes are designed as per the standard of NACE, DNV, ISO.

■ GALVALUM III (Al-Zn-In-Si)

Element		Content (%)
Zinc	(Zn)	2.000 ~ 6.000
Indium	(In)	0.010 ~ 0.020
Silicon	(Si)	0.080 ~ 0.200
Iron	(Fe)	0.130 max.
Copper	(Cu)	0.006 max.
Cadmium	(Cd)	—
Other Impurities		0.100 max.
Aluminum	(Al)	Remainder

■ DNV-RP-B401-2011 (Al-Zn-In)

Element		Content (%)
Zinc	(Zn)	2.500 ~ 5.750
Indium	(In)	0.015 ~ 0.040
Silicon	(Si)	0.120 max.
Iron	(Fe)	0.090 max.
Copper	(Cu)	0.003 max.
Cadmium	(Cd)	0.002 max.
Other Impurities		0.100 max.
Aluminum	(Al)	Remainder

■ GS EP COR 201 (Al-Zn-In)

Element		Content (%)
Zinc	(Zn)	4.750 ~ 5.750
Indium	(In)	0.015 ~ 0.020
Silicon	(Si)	0.060 ~ 0.120
Iron	(Fe)	0.120 max.
Copper	(Cu)	0.003 max.
Cadmium	(Cd)	0.002 max.
Other Impurities		0.100 max.
Aluminum	(Al)	Remainder

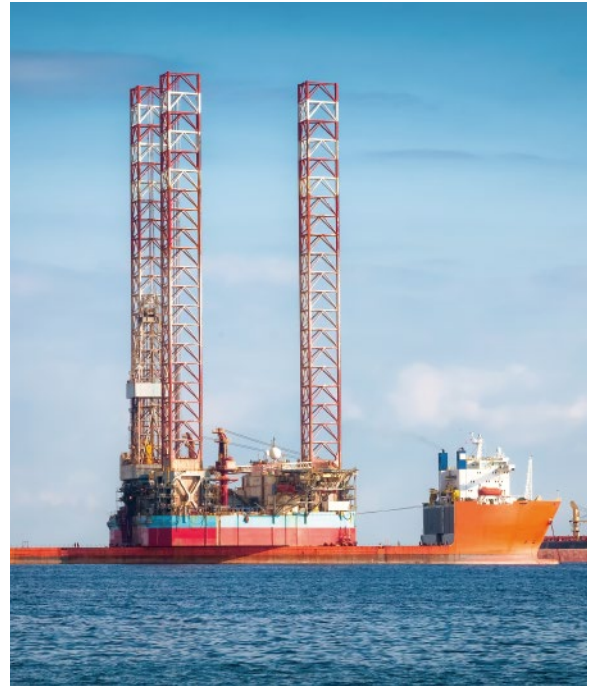


FLUSH-MOUNTED ALUMINUM SLENDER ANODES

ELECTROCHEMICAL PROPERTIES

Technical Measurement	Performance
Open Circuit Voltage (min)	-1.10 Volts
Closed Circuit Voltage (min)	-1.05 Volts
Current Capacity	2500 A.h/kg (1135 A.h/lbs)
Current Efficiency (min)	90%
Consumption Rate	3.4 kg/A.y (7.6 lbs/A.y)

* The open/closed circuit voltage is with respect to a Ag/AgCl reference electrode.

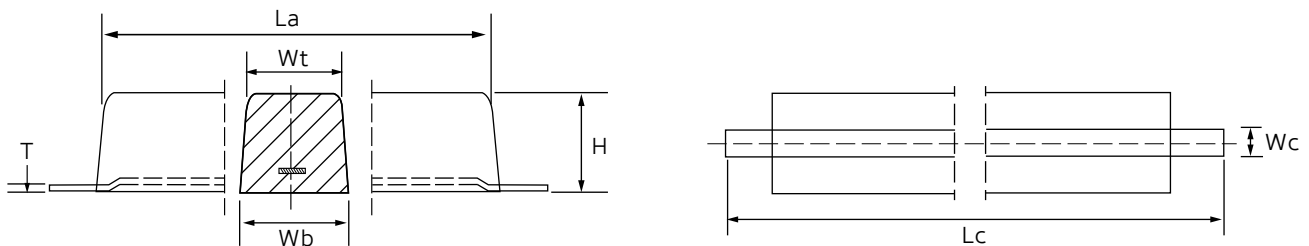


PRACTICAL APPLICATION

Our aluminum anodes are used for the cathodic protection of external submerged areas of wind turbine foundations, MOUs (semisubs and jack-ups) and offshore floaters(FSO, FSUs and FPSO's).

SPECIFICATIONS

■ Trapezoidal Anode with Flat Bar Insert

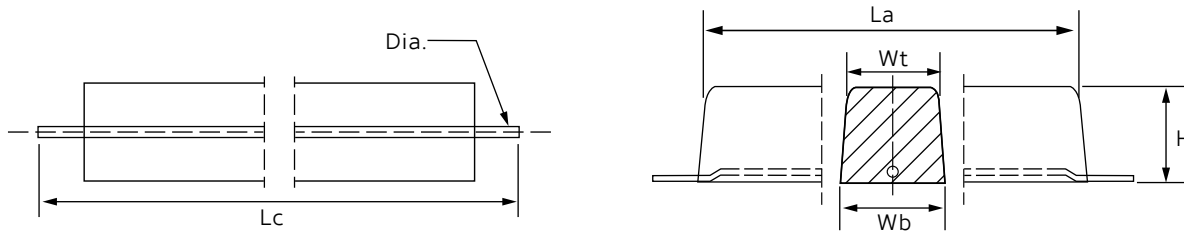


Item No.	Anode Dimensions				Core Size			Weight	
	Wt	Wb	H	La	Wc	T	Lc	N.W	G.W
YX-AL-TF1	148 mm (5.8")	178 mm (7.0")	170 mm (6.7")	1500 mm (59.1")	50 mm (2.0")	8 mm (0.31")	1800 mm (70.9")	110 kg (242.5 lbs)	116.8 kg (257.5 lbs)
YX-AL-TF2	180 mm (7.1")	220 mm (8.7")	180 mm (7.1")	850 mm (33.5")	60 mm (2.4")	8 mm (0.31")	1100 mm (43.3")	81.5 kg (179.7 lbs)	85.5 kg (188.5 lbs)
YX-AL-TF3	200 mm (7.9")	280 mm (11.0")	150 mm (5.9")	800 mm (31.5")	60 mm (2.4")	8 mm (0.31")	1050 mm (41.3")	76.5 kg (168.7 lbs)	80.5 kg (177.5 lbs)
YX-AL-TF4	160 mm (6.3")	220 mm (8.7")	180 mm (7.1")	700 mm (27.6")	60 mm (2.4")	8 mm (0.31")	950 mm (37.4")	63.9 kg (140.9 lbs)	66.5 kg (146.6 lbs)
YX-AL-TF5	115 mm (4.5")	135 mm (5.3")	130 mm (5.1")	1250 mm (49.2")	40 mm (1.6")	8 mm (0.31")	1500 mm (59.1")	54.0 kg (119.0 lbs)	56.9 kg (125.4 lbs)
YX-AL-TF6	115 mm (4.5")	135 mm (5.3")	130 mm (5.1")	1000 mm (39.4")	40 mm (1.6")	8 mm (0.31")	1250 mm (49.2")	43.2 kg (95.2 lbs)	45.6 kg (100.5 lbs)



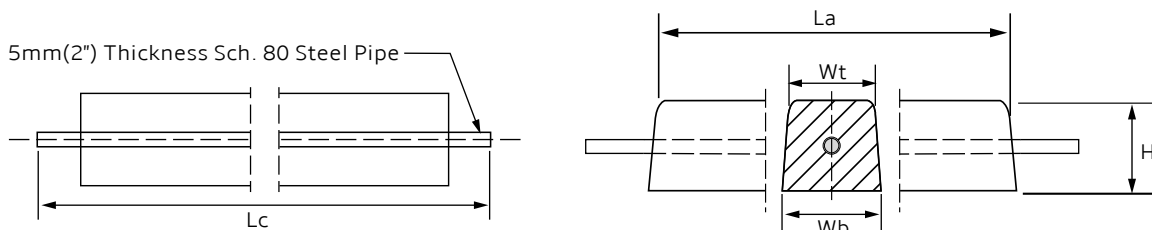
FLUSH-MOUNTED ALUMINUM SLENDER ANODES

■ Trapezoidal Anode with Solid Rod Insert



Item No.	Anode Dimensions				Core Dimensions		Weight	
	Wt	Wb	H	La	Dia.	Lc	N.W	G.W
YX-AL-TR1	148 mm (5.8")	178 mm (7.0")	170 mm (6.7")	1500 mm (59.1")	25 mm (0.98")	1800 mm (70.9")	110 kg (242.5 lbs)	116.8 kg (257.5 lbs)
YX-AL-TR2	180 mm (7.1")	220 mm (8.7")	180 mm (7.1")	850 mm (33.5")	25 mm (0.98")	1100 mm (43.3")	81.5 kg (179.7 lbs)	85.5 kg (188.5 lbs)
YX-AL-TR3	200 mm (7.9")	280 mm (11.0")	150 mm (5.9")	800 mm (31.5")	25 mm (0.98")	1050 mm (41.3")	76.5 kg (168.7 lbs)	80.5 kg (177.5 lbs)
YX-AL-TR4	160 mm (6.3")	220 mm (8.7")	180 mm (7.1")	700 mm (27.6")	22 mm (0.87")	950 mm (37.4")	63.9 kg (140.9 lbs)	66.5 kg (146.6 lbs)
YX-AL-TR5	115 mm (4.5")	135 mm (5.3")	130 mm (5.1")	1250 mm (49.2")	18 mm (0.71")	1500 mm (59.1")	54.0 kg (119.0 lbs)	56.9 kg (125.4 lbs)
YX-AL-TR6	115 mm (4.5")	135 mm (5.3")	130 mm (5.1")	1000 mm (39.4")	18 mm (0.71")	1250 mm (49.2")	43.2 kg (95.2 lbs)	45.6 kg (100.5 lbs)

■ Trapezoidal Anode with Straight Tubular Insert



Item No.	Anode Dimensions				Core Dimensions		Weight	
	Wt	Wb	H	La	Dia.	Lc	N.W	G.W
YX-AL-TT1	115 mm (4.5")	135 mm (5.3")	130 mm (5.1")	500 mm (19.7")	16 mm (0.63")	750 mm (29.5")	21.6 kg (47.6 lbs)	1.1 kg (2.4 lbs)
YX-AL-TT2	115 mm (4.5")	135 mm (5.3")	130 mm (5.1")	750 mm (29.5")	16 mm (0.63")	1000 mm (39.4")	32.5 kg (71.7 lbs)	1.5 kg (3.3 lbs)
YX-AL-TT3	115 mm (4.5")	135 mm (5.3")	130 mm (5.1")	1000 mm (39.4")	20 mm (0.79")	1250 mm (49.2")	43.0 kg (94.8 lbs)	3.0 kg (6.6 lbs)
YX-AL-TT4	115 mm (4.5")	135 mm (5.3")	130 mm (5.1")	1250 mm (49.2")	20 mm (0.79")	1500 mm (59.1")	53.7 kg (118.4 lbs)	3.6 kg (7.9 lbs)
YX-AL-TT5	160 mm (6.3")	220 mm (8.7")	180 mm (7.1")	700 mm (27.6")	22 mm (0.87")	950 mm (37.4")	63.8 kg (140.7 lbs)	2.8 kg (6.2 lbs)
YX-AL-TT6	200 mm (7.9")	280 mm (11.0")	150 mm (5.9")	800 mm (31.5")	25 mm (0.98")	1050 mm (41.3")	76.5 kg (168.7 lbs)	4.0 kg (8.8 lbs)
YX-AL-TT7	180 mm (7.1")	220 mm (8.7")	180 mm (7.1")	850 mm (33.5")	25 mm (0.98")	1100 mm (43.3")	81.5 kg (179.7 lbs)	4.2 kg (9.3 lbs)
YX-AL-TT8	148 mm (5.8")	178 mm (7.0")	170 mm (6.7")	1500 mm (59.1")	25 mm (0.98")	1800 mm (70.9")	110 kg (242.5 lbs)	6.8 kg (15.0 lbs)





Industrial Corrosion Control Solutions Provider

Established in 2003, YUXI has over a 20-year heritage of innovation in corrosion control science and technology. We're a spirited team of ambitious thinkers and pioneer sheep with a common goal in mind: protect our clients' assets from corrosion with cost-saving measures.

We have the most comprehensive catalog of cathodic protection materials including anodes, transformer rectifiers, backfills, coatings, etc. Our anodes and supplies are manufactured to strict quality standards through an ISO 9001 quality management system and are guaranteed to offer excellent performance in the industry.



Go to Our Web



Follow Us on LinkedIn



www.yuxi-anode.com

6/F, Tianlu Building, 767 Liangzhu Road,
Ningbo 315000, P.R. China

E-mail: info@yuxi-anode.com

Tel: +86 (574) 8388 2233

Fax: +86 (574) 8388 2238