



## Water Heater Flexible Anode Rod

A flexible steel wire with a number of magnesium anodes along its length. Rather like a string of sausages. This has a rigid section at one end with a threaded connection.

Flexible aluminum and magnesium anode rods are designed for those limited spaces where a straight anode rod will be unable to be inserted into the water heater due to limited access directly above, such as low ceilings, closets, attics, under stairwells or in basements. Just bend the anode rod at its flexible sections and insert into opening at top of water heater one section at a time until all sections are inserted. Just make sure that the anode rod is not touching the side of the water heater once completely inside.

Office: +86(574)8388 2233

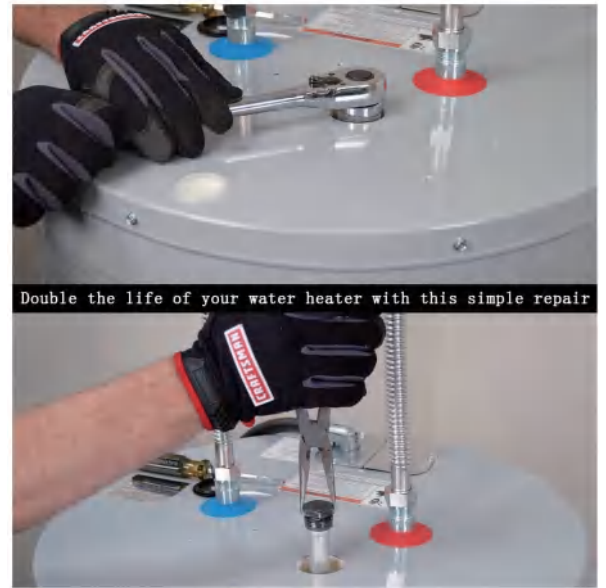
Dongxi, Xinqiao, Xiangshan  
Ningbo 315725, P.R.China

[info@yuxi-anode.com](mailto:info@yuxi-anode.com)

[www.yuxi-anode.com](http://www.yuxi-anode.com)

## FEATURES

- ▶ Segmented flexible design for easy installation
- ▶ It can be cut to length to fit different size heaters
- ▶ Our anode rods are expected to provide about two years of corrosion protection
- ▶ Compatible with Rheem, BWC, AO, STATE and many more that also use the standard ¾" NPT Anode Rod
- ▶ Connection



## CHEMICAL COMPOSITION

Standard	ASTM B843 - AZ31B	AS2239-2003 A5
Aluminum	2.50-3.50%	Balance
Manganese	0.20-1.00%	/
Zinc	0.60-1.40%	4.00-5.00% Max
Calcium	0.04% Max	/
Silicon	0.10% Max	0.25% Max
Copper	0.01% Max	/
Nickel	0.001% Max	/
Fe	0.005% Max	0.25% Max
Sn	/	0.05-0.25% Max
Other purity (each)	/	/
Total Purity	0.30% Max	0.15% Max
Remaining	Magnesium	/

# SPECIFICATIONS



NO.	Material	Diameter (mm)	Core (mm)	Length (mm)	Steel Cap
FLWA	Aluminum	21.3	3.4	1150mm	3/4" NPT
FLWM	Magnesium	21.3	3.4		3/4" NPT

► Segments, Length, Thread can be customized